

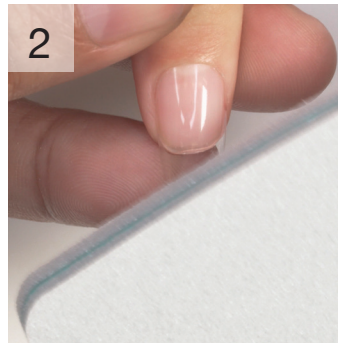
INSTRUCTIONS

Gelish Soft Gel Tips- Shape & Finish



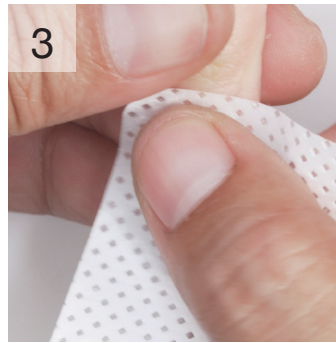
Step 1

Refine free edges using the **180/180 GRIT FILE**.



Step 2

Gently remove the shine using the **100/180 BUFFER** or **GELISH GO FILE**.



Step 3

Remove the dust using **NAIL SURFACE CLEANSE** and **WIPE IT OFF** lint-free wipes.



Step 4

Choose any **GELISH** or **MORGAN TAYLOR** finishing option.



gelish®
SOFT GEL