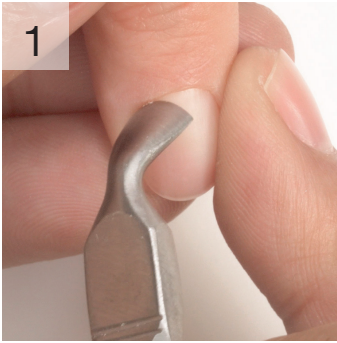


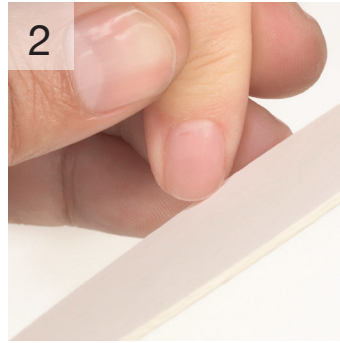
INSTRUCTIONS

Gelish Soft Gel Tips- Preparation



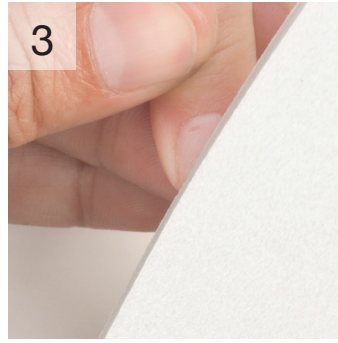
Step 1

Sanitize your client's hands and nails. Push back the eponychium and clean the nail plate of excess cuticle.



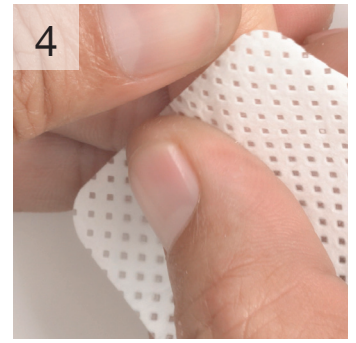
Step 2

Shape the natural nail using a **240/240 THIN WOODEN FILE**.



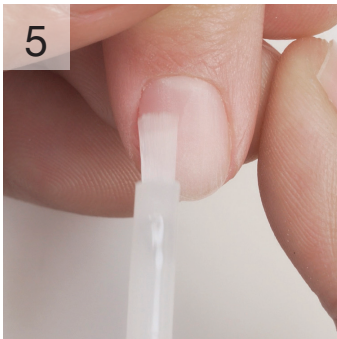
Step 3

Gently remove the shine using a **100/180 BUFFER**.



Step 4

Cleanse nails with **NAIL SURFACE CLEANSE** and a **WIPE IT OFF** lint-free wipe.



Step 5

Springly, apply **PH BOND** Nail Prep to the nail plate.



240/240
WOODEN FILE

PH BOND
NAIL PREP

NAIL SURFACE
CLEANSE

WIPE IT OFF
LINT-FREE WIPES

100/180
BUFFER

gelish
SOFT GEL