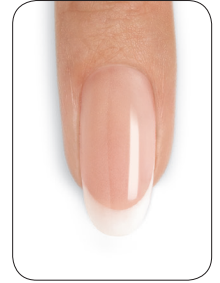


# Liquid & Powder Enhancements Sculpted on a Form



**90 MIN** A service option ideal for healthy, natural nails with a slight extension edge requiring length and design enhancement.

## STEP 1: P.R.E.P.

### 1. P - Perform a manicure.

- a. Have the client wash their hands with soap and water and towel dry.



- b. Massage **COOLBLUE™** Hand Cleanser into the client's hands to cleanse skin.

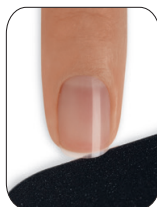


- c. Remove any existing nail color from the natural nail using an acetone-based polish remover (**OFFLY FAST™** Moisturizing Remover or **SCRUBFRESH™** Nail Surface Cleanser) and a plastic-backed lint-free pad.



- d. If necessary, trim the length from each nail, using nail clippers.

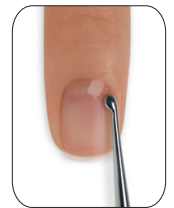
- e. Shape the extension edge of each nail with the **240-grit side of a Kanga™ File** or **Koala Buffer™**.



- f. Apply a small amount of **CuticleAway™ Professional Cuticle Remover** evenly around the cuticle of each nail.\*

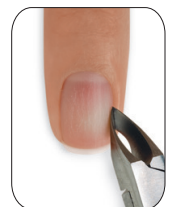


- g. Gently slide a **cuticle pusher** along the nail plate toward the cuticle area and along the lateral folds to lift and loosen any non-living tissue from the nail plate. Remove any excess **CuticleAway™** from the nail and use a **curette** to remove non-living tissue up to the eponychium and lateral folds.



- h. **Scrub** nails thoroughly with soap and a damp brush, then rinse with warm water to remove the cuticle remover and soap; towel dry.\*

- i. Use a **manicure nipper** to carefully remove any loosened, non-living tissue, as well as any loose pieces of skin or hangnails. Use a gentle touch during cuticle removal to protect the seals. Never cut living tissue as it can lead to infection.



\* Dry P.R.E.P. is an excellent option for clients with great natural nails, who do not build excessive cuticle between services. Eliminating the wet cuticle treatment can shorten the service time and increase adhesion for some clients.

- R - Remove** shine from the natural nail surface with the **240-grit side of the Koala Buffer™** in the direction of nail growth.



- E - Eliminate** surface contaminants and **P - Purify** nail plate layers.

- Thoroughly cleanse and temporarily dehydrate the nail plate layers with **SCRUBFRESH™** using a lint-free, plastic-backed pad. Gently pull lateral folds back and scrub thoroughly to be sure all areas of the nail are completely clean.



### STEP 2:

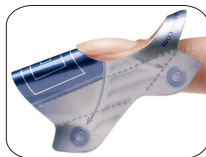
## Apply PERFORMANCE FORMS™

For a comprehensive tutorial of **CND™** form application techniques see the **CND™ PERFORMANCE FORMS™ Application Step-by-Step**.

- For wide nails, pre-fold the vertical perforation on each side to help shape the form. For small nails or dramatic C-curve, this is not necessary.



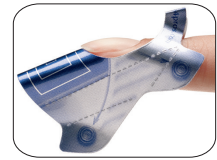
- Place** the form under the extension edge at a 45-degree angle and gently rock up and under the natural nail extension edge. Pre-tailor the form if necessary.



- Squeeze** the front tabs together and press tabs up toward the nail to create a perfect C-curve.



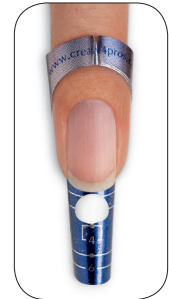
- Squeeze the rear tabs to secure the form. The rear V notch may be pinched together or opened to accommodate small or large fingers.



### STEP 3:

## Zone 1 - Smile Lines

- Place a **bead in the middle of Zone 1**.



- Next, **press the bead up one side into the corner** to begin establishing the depth of the smile line using small, controlled presses and a **smooth, fluid motion**.



- Finish the smile line by **pressing to the opposite side** and into the corner. Smooth the entire Zone to ensure an even surface.



- If needed**, wipe out excess liquid from the brush. Then, using the flattened flags of the brush, detail the smile line starting from the center and working towards the corners of the smile line.

#### STEP 4:

## Zone 2 - Apex and Upper Arch

1. Place a **bead in the middle of Zone 2**.
2. **Press the product from side to side**, concentrating on making complete contact with the nail plate. **Keep the bulk of the product at the apex** and taper to the sidewalls forming a thin edge without touching the skin. Lightly feather any remaining product to Zone 1.



Zone 2 should be the **thickest part of the enhancement**, protecting the stress area, where nails most often break. The highest point of the arch, called the apex, should be placed directly between the cuticle line and the extension edge for proper balance and beauty. From the apex, the product should taper to a thin edge in all directions.

#### STEP 5:

## Zone 3 - Cuticle Area

1. Place a **bead in the middle of Zone 3** to complete the upper arch. Press from side to side until the entire area is covered, leaving a tiny free margin all the way around the sidewalls and cuticle area.
2. **Check** the enhancement for clean, continuous lines on both the upper and lower arch. Add product where necessary. Remember to use the highlight on the nail to look for high and low spots in the product.



**A thin application in Zone 3** will produce natural-looking, long-lasting enhancements, as well as help prevent lifting.

#### STEP 6:

## Shape and Define

For a comprehensive tutorial of CND finishing techniques see the *Enhancement Finishing Step-by-Step*.

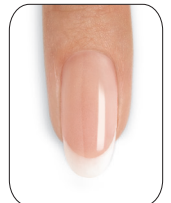
1. Remove **PERFORMANCE FORMS™** from the nail.
2. Refine the extension edge and sidewalls using the **240-grit Kanga™ File**.
3. Shape and define the nail using the **180-grit side of the Hot Shot™ File** followed by the **Boomerang Padded File**.



#### STEP 7:

## Bring to a High Shine

1. Smooth the surface using the **240-grit side of the Koala Buffer™**.
2. Apply a drop of **SOLAROIL™** Nail & Cuticle Care to each nail and buff with the **1200-grit side of a Koala Buffer™** for scratch refinement. Rub any remaining oil into the nail and surrounding soft tissue.
3. Finish nails to a high-gloss shine with the **Girlfriend™ Buffer, Glossing Buffer** or **Glossing Block**.



**As an alternative**, skip the **SOLAROIL™** application above and buff with the **180-grit Boomerang Padded File**. Remove any dust with a disinfectable brush and a plastic-backed pad saturated with **99% Isopropyl Alcohol**. Apply **BRISA™ Gloss** and cure for one minute (**preset button 3**) in the in the **CND™ LED Lamp\***. Then remove the top film with **99% Isopropyl Alcohol**. Apply a drop of **SOLAROIL™** to each nail.



\*If using the **CND™ UV Lamp**, cure for two minutes.

## **PRODUCTS REQUIRED**

**COOLBLUE™** Hand Cleanser  
**OFFLY FAST™** Moisturizing Remover  
CuticleAway™ Professional Cuticle Remover  
**SCRUBFRESH™** Nail Surface Cleanser  
**RETENTION+™** or **RADICAL SOLARNAIL™**  
Sculpting Liquids  
Perfect Color or **RETENTION+™**  
Sculpting Powders  
**CND™** Files and Buffers  
**CND™ PERFORMANCE FORMS™**  
**CND™** ProSeries Liquid & Powder Brush  
**BRISA™** Gloss\*  
**SOLAROIL™** Nail & Cuticle Care

\*Optional

## **ACCESSORIES/EQUIPMENT REQUIRED**

Hand towels  
Hand soap  
Plastic-backed, lint-free pads  
Disinfectable dust brush\*  
99% Isopropyl Alcohol\*  
Cuticle pusher  
Manicure nippers  
Nail clippers  
Curette  
Dappen dish  
**CND™** LED Lamp\*

\*Optional